



Start Here

My Verizon

You're now connected to Verizon 4G LTE. Lightning fast, Lightning strong. For more information, visit verizonwireless.com/4GLTE.

REGISTER at verizonwireless.com/myverizon, to learn how to use your phone.

- Go to **My Verizon**
- Click on **Support**
- Click on **Get Help With Your Device**
- Click on **Select Another Device**

My Verizon allows you to manage your account, pay your bill, purchase accessories & more.

Assistance is at your fingertips anytime at verizonwireless.com.

Customer Service is at your disposal at **1-800-922-0204** or at any Verizon Wireless Store.

A User Guide is available on demand—simply download at support.vzw.com/phones or call **1-800-229-1235** to order a copy.

NOTE: Devices and software are constantly evolving—the screen images and icons you see here are for reference only.

Phone Features



Home Screen

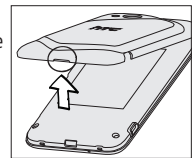


- Slide your finger left or right to view other Home screen panels.
- Press **HOME** to view, arrange, remove, or add Home screen panels.
- Missed call, new email, and upcoming event notifications show on the status bar. Press and hold the status bar, and then slide it down to see all your notifications.

First Steps

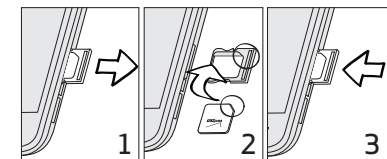
Removing the Back Cover

1. Make sure the wireless device is turned off.
2. Hold the device face down.
3. Lift the back cover from the notch.



Installing the SIM Card*

1. With the back cover removed, locate the SIM card tray at the right panel of the device, and then pull it out.
2. Place the SIM card into the tray.
3. Insert the SIM card tray back into the wireless device. Make sure that the SIM card's notched corner is at the upper right corner of the tray before inserting.

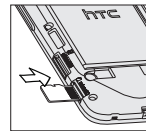


*A Subscriber Identity Module (SIM Card) is a "smartcard" that houses personal information, such as your mobile phone number, calling plan, and account information, such as contacts, text messages, and call history.

The Verizon Wireless 4G LTE SIM Card is compatible with any Verizon Wireless 4G LTE certified device. The 4G LTE SIM Card can move from one device to another and your wireless service will work seamlessly as long as you have a compatible device and service plan. To see which devices are compatible with the Verizon Wireless 4G LTE SIM Card, visit verizonwireless.com/certifieddevice.

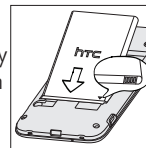
Installing the microSD card

With the back cover removed and the wireless device facing down, insert the microSD card fully into the slot as shown.



Installing the Battery

Align the battery contacts with the terminals in the battery compartment and push down until the battery clicks into place.



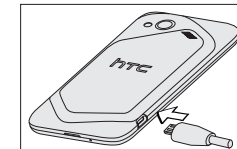
Installing the Back Cover

1. Align the back cover onto the top part of the wireless device.
2. Press down firmly along the sides and the bottom part of the back cover. You will hear a click when the back cover is locked in place.

Charging the Battery

WARNING! Please use only an approved charging accessory to charge your device. Improper handling of the USB connector, as well as the use of an incompatible charger, may cause damage to your device and void the warranty.

1. Insert the small end of the USB cable into the USB connector.



2. Insert the other end of the USB cable into the power adapter.
3. Plug in the power adapter to an electrical outlet to start charging the battery.

NOTE: It's important to fully charge the battery before turning on your wireless device.

Powering Your Device On

Press and hold the **POWER/LOCK** button for a few seconds until the screen turns on.

Setting Up Your Device

When you turn on your wireless device for the first time, you have the option to quickly set up email accounts, and sign in to social networking sites. Simply follow the onscreen instructions to complete the initial setup of your wireless device.

For more information visit smartphones.verizonwireless.com. Click **Support**, under **Get Help With Your Device**, and then select your device.

Backup AssistantSM Plus

Backup Assistant and Media Manager are now Backup Assistant Plus. Protect your contacts and access your media when you need it on the go or at home. Go to verizonwireless.com/baplus.

Adding Your Google Account

1. On the Home screen, tap **Settings > Accounts & sync.**
2. Tap **+ > Gmail.**

NOTE: If you don't have a Google Account, tap **+ > Google Account > New** and follow screen instructions to create one. You can also create a Google Account online at google.com.

3. Enter your email address and password, and then tap **Sign in.**





Setting Up Your Device

Now your Gmail, Google contacts, and Google calendar events can all be loaded to your phone automatically.

Record your Google account information. Please keep this document in a safe place.

Username: _____@gmail.com
Password: _____

Adding Other Email Accounts

1. On the Home screen, tap  > **Settings** > **Accounts & sync**.
2. Tap  > **Mail**.
3. Enter your email address and password, and then tap **Sign in**.


Locking and Unlocking Your Device

Prevent accidental key presses by locking your wireless device.

To lock your wireless device and turn off the screen, in standby mode, press the **POWER/LOCK** button.

To unlock the wireless device, press the **POWER/LOCK** button. Drag the ring up the screen to unlock.


Selecting a Ringtone

1. On the Home screen, tap  > **Settings** > **Personalize**.
2. Tap the **Sound** tab and then tap **Ringtone**.
3. Tap the ringtone you want to use. The ringtone briefly plays when selected.

TIP: If the audio file is on your storage card, tap **Add**, select the item you want to import, and then tap **OK**.

4. Tap **Apply**.

Making a Call

On the Home screen, tap , and then do one of the following:

- Dial the number, and then tap **Call**.
- Tap the **People** tab, press and hold the contact you want to call, and then tap **Call mobile**.


NOTE: The option available is the default communication method you assigned to the contact.

Receiving a Call

Tap **Answer**.

Or if the screen is off, it will turn back on and show the lock screen. Drag the ring up the screen to answer the call.

Setting Up Voice Mail

1. On the Home screen, tap .
2. Dial ***86 (*VM)** and tap **Call**. If you hear a greeting, tap **#** to interrupt, and follow the setup tutorial.

Accessing Voice Mail


From your device—dial ***86** and tap **Call**. When you hear the greeting, tap **#** to interrupt, follow the prompts.

From any phone—dial your wireless number. When you hear the greeting, press **#** to interrupt, follow the prompts.

NOTE: Voice mailboxes not set up within 45 days will be canceled. Your voice mailbox is not password protected until you create a password by following the setup tutorial.

Using Visual Voice Mail


View a list of messages without dialing into a mailbox. Listen or erase with the touch of a button.

1. If you are a new Verizon Wireless subscriber, first dial ***86** to set up your voice mail service.
2. On the Home screen, tap **Voice Mail** .

3. Tap **Visual Voice Mail** and follow the prompts to download it for future use.

Please note that it may take five minutes for Visual Voice Mail to set up. Your password and voice mail messages will be stored on the device and messages will be available to anyone with access to the device. To limit unauthorized access to the voice mail, consider locking the device when not in use. To cancel your Visual Voice Mail service, go to verizonwireless.com/myverizon or contact Customer Service. V Block must be removed to use Visual Voice Mail. Data charges apply only to the application download, which requires approximately 1 MB of data.

Connecting a Bluetooth® Headset

1. On the Home screen, tap  > **Settings**, and then tap the Off/On switch next to **Bluetooth**.
2. Tap **Bluetooth**.
3. Tap the name of the Bluetooth headset in the list. Your wireless device then automatically tries to pair with the headset.
4. If automatic pairing fails, enter the passcode supplied with your headset.



Apps & More

Play it up with music, ringtones, wallpapers, apps and games. Keep up with Twitter™ and Facebook. For details and pricing, go to verizonwireless.com.

Data charges may apply.

Installing Apps

More than hundreds of thousands of apps are available to download from **Google Play**.


1. On the Home screen, tap  > **Play Store**  > **Apps**.
2. Navigate or search for the item you want to download and then select it.
3. On the application details screen, tap **Download** (for free apps) or tap the price (for paid apps).
4. Follow screen instructions to download and install the app.

Verizon Tones (V CAST Tones)

Search, preview, purchase and manage ringback tones and ringtones from your favorite artists all in one place. Go to verizonwireless.com/mediastore.

Verizon Video

Watch full episodes of your favorite shows. Get hundreds of TV shows, live sports and events. Go to verizonwireless.com/video.

On the Home screen of your wireless device, tap  > **Verizon Video**.


Media Store

Find apps for entertainment, travel, productivity, navigation, ringback tones, ringtones, games, wallpaper and more. Go to verizonwireless.com/mediastore.

Email

Check email on the go with popular Internet-based email accounts, including Yahoo!® Mail, AOL® Mail, Gmail®, Windows Live® Hotmail® and Verizon.net.

Mobile Web

Take the Internet on the go. You can reach the latest news, get the weather and follow your stocks. On the Home screen, tap **Internet** .

Verizon SafeGuards

Family and Safety Apps & Services. Get the most robust parental controls. Go to verizonwireless.com/safeguards.


Location Based Services

This phone can determine its location, which is useful for services such as navigation, shopping and weather. For your safety, it's defaulted to only acquire your location when you dial 911. To use Location Based Services, go to **Settings** > **Location** to turn on location services.

Your wireless device can determine its (and your) physical, geographical location ("Location Information") and can associate Location Information with other data. Additionally, certain applications, services and programs are capable of accessing, collecting, storing and using Location Information and disclosing Location Information to others. You should use caution when determining whether or not Location Information should be made available to others and you should review any applicable third party policies before providing access. To limit potential unauthorized access to your Location Information, Verizon Wireless offers various mechanisms and settings to manage access to location data. By enabling location settings you are permitting third party access to Location Information through software, widgets or peripheral components you choose to download, add or attach to your wireless device or through web access, messaging capabilities or other means and you are authorizing Verizon Wireless to collect, use and disclose your Location Information as appropriate to provide you with any location services that you enabled.

VZ Navigator®

Get premium GPS voice navigations and 3D maps with spoken real-time traffic alerts. Find movie times, event info and gas stations. Go to verizonwireless.com/navigator.

On the Home screen of your wireless device, tap  > **VZ Navigator**.

Global Ready™


Verizon Wireless keeps you connected around the corner and around the world. For up-to-date information on destinations and rates go to verizonwireless.com/triplanner.

Global Travel Program

Voice service available in more than 220 countries and data available in more than 205 countries — including more than 150 countries with 3G speed. This is the perfect short-term solution for the occasional or infrequent global traveler when traveling outside of the U.S. to GSM locations. For more information, go to verizonwireless.com/globaltravel.

Learn More

Explore the functions and features of your wireless device right at the palm of your hand.

1. Slide to the left of the main Home screen, and then tap **Guided Tours** .
 2. Tap **View Show Me Tutorials** to download the latest How-tos and Show Me videos on your wireless device.
- You can also tap **Basic Set-up and Usage Videos** for video tutorials, or tap **Go to My Verizon** to access your account.

Customer Information

Your Wireless Device and Third Party Services: Verizon Wireless is the mobile carrier associated with this wireless device, but many services and features offered through this wireless device are provided by or in conjunction with third parties. Verizon Wireless is not responsible for your use of this wireless device or any non-Verizon Wireless applications, services and products including any personal information you choose to use, submit or share with others. Specific third party terms and conditions, terms of use, and privacy policies shall apply. Please review carefully all applicable terms and conditions and policies prior to using this wireless device and any associated application, product or service.

Hearing Aid Compatibility Information: This phone has been tested and rated for use with hearing aids for some of the wireless technologies that it uses. However, there may be some newer wireless technologies used in this phone that have not been tested yet for use with hearing aids. It is important to try the different features of this phone thoroughly and in different locations, using your hearing aid or cochlear implant, to determine if you hear any interfering noise. Consult your service provider or the manufacturer of this phone for information on hearing aid compatibility. If you have questions about return or exchange policies, consult your service provider or phone retailer.